

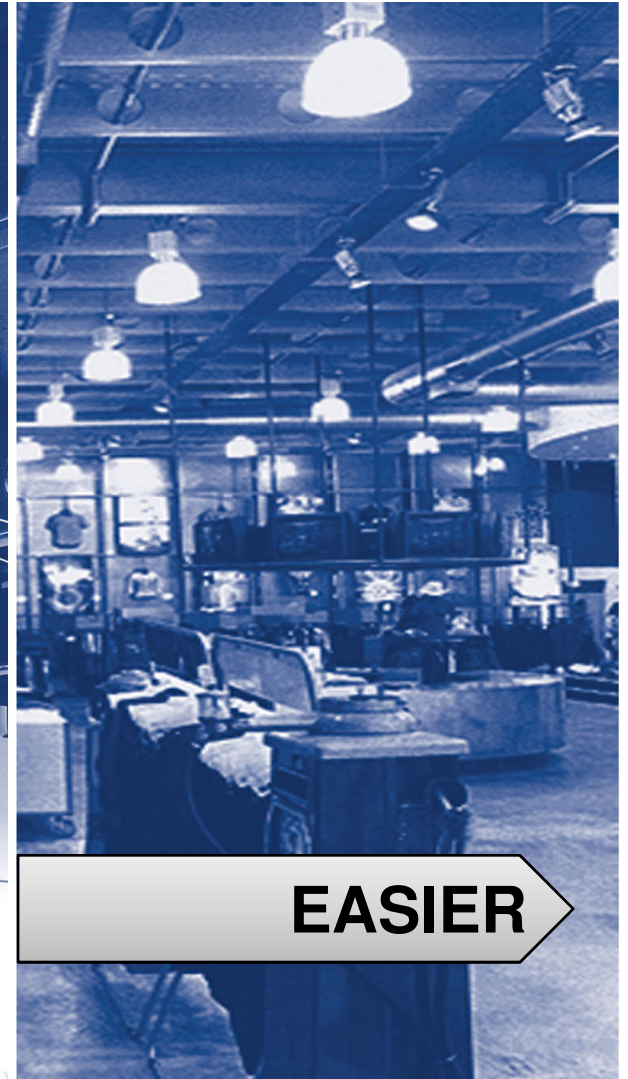
Speed Floor System

Jindal

Speed

Floor

SPEEDFLOOR



Speed Floor Joist

- ❑ The heart of the system is a roll-formed, galvanised (Z275) high tensile (350MPa) steel joist 3mm thick.
- ❑ The joist is manufactured by roll-former in a single integrated operation.
- ❑ The joists are Punched, pressed, pre-cambered and cut to length at a fast production rate.



Joist Roll Forming Line



Speed Floor System:

Average Production Speed : 100 Mtr / Hour

Nominal Coil Width : 400 mm to 600 mm

Gauge : 3 mm

Steel Grade : G350 Mpa

Machine Capacity : 8000 MT / Year

or (1 Million Sq. Mtr / Year Floor Area)

Jindal Speed Floor



LIGHTER | FASTER | EASIER

Speed Floor Joist Stocking & Bundle



LIGHTER | FASTER | EASIER

Ready to go



- ❑ The shoes are simply bolted to the joists and ready to ship.



- ❑ Joists can be palletized, containerised or loaded on and transport directly to job site.



LIGHTER | FASTER | EASIER

Design Capabilities:



Location	Design Manpower	Design Software	Detailing Software
Punjipatra (Raigarh)	32	1. Staad Pro 2. STAP 3. In House Design Package for LGS	1. Tekla 2. ACAD 3. Pinnacle CAD – Vertex (LGS)
Raipur	18		
Total	50		

Affiliations:

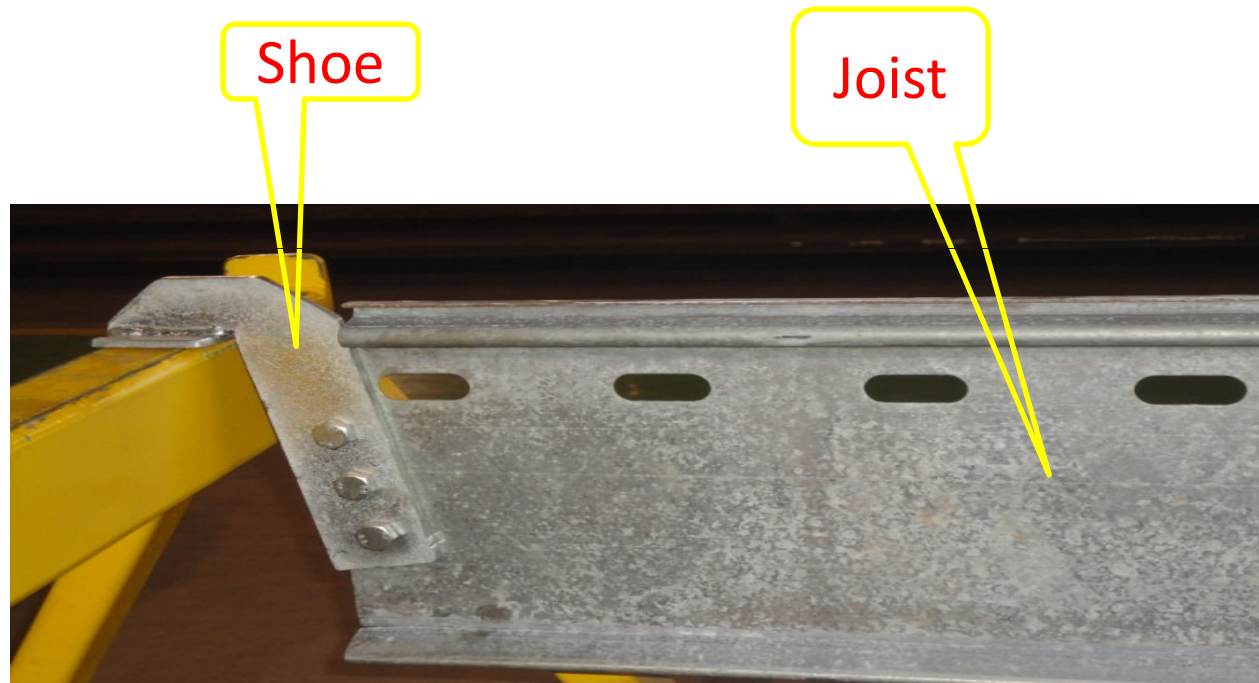


- Fire Test** : No.Fr 2392 BRANZ The Resource Centre for Building Excellence, NZ.
- Acoustic Report** : No. 975375ARA by Marshall Day and Associates
- Shear Capacity Speed Floor** : Dr. J W Butterworth, Department of Civil & Environment Engg, University of Auckland, NZ
- Slab Panel Membrane (SPM)** : Analysis by here (Heavy Engineering Research Association) Refer DCB reports No. 70 & 71 (Oct, 2002 – Jan. – 2003).

Components of Speed Floor System:

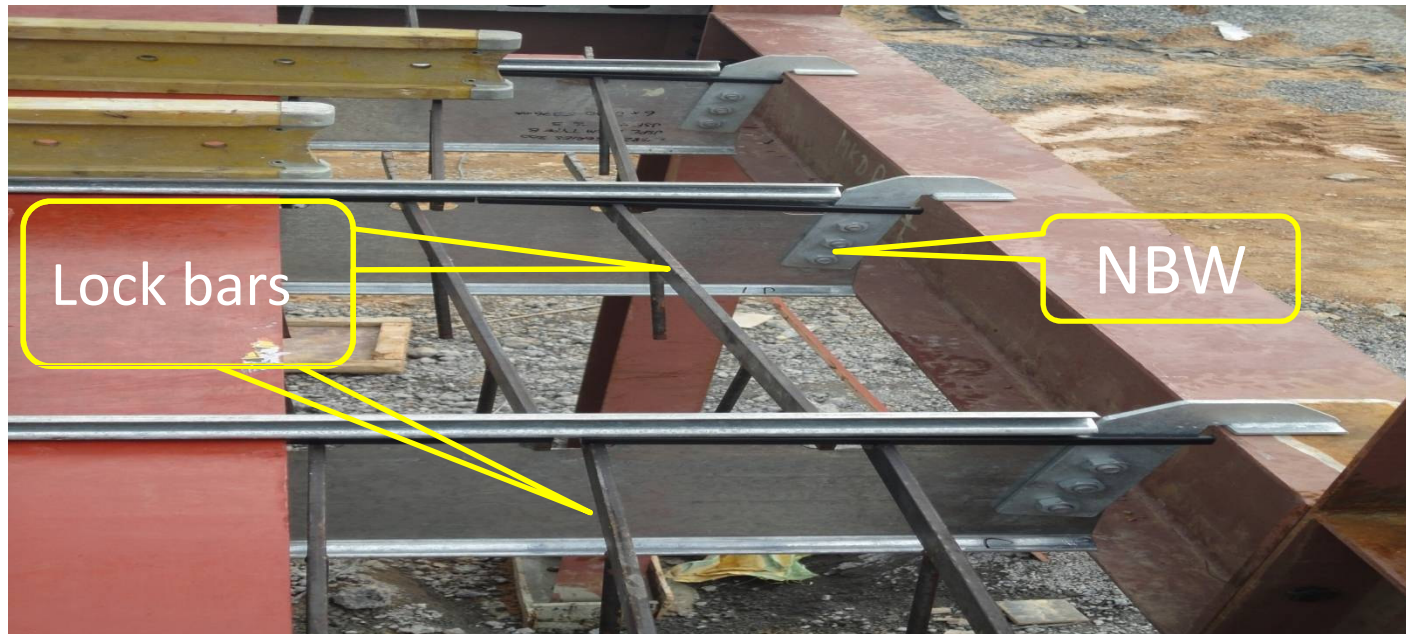


1. JOIST (Series 200, 250, 300, 350 and 400)



2. Shoe

3. Lock Bar 630 mm , 930 mm & 12300 mm



4. HT NBW M16 X 40 mm Long

5. Hanging Angle L40 X 75 X 1.8 mm



6. Edge Angle L40 X 90 X 1.6 mm

7. Plywood 1.2 Mtr X 2.4 Mtr X 12 mm



8. Tor Steel – 8 mm Diameter

9. Welded Mesh 6 mm Diameter

Concrete Slab Casting:



LIGHTER | FASTER | EASIER



Projects using Speed Floor

LIGHTER | FASTER | EASIER

Commercial Buildings



- ❑ 7 storey building constructed using structural steel frame with Speed-floor.



- ❑ The ground floor retail complex exposing Speed floor joists



- ❑ The store's services, such as electrical cabling, have been accommodated through the exposed joists.



Multi level Car parks

- ❑ The lightweight Speed floor joists and structural steel resulted in minimal foundations in the 10 storey car park
 - ❑ Completed in 16 weeks
-
- ❑ This 220,000 ft² car park with lightweight steel structure.



Low rise buildings



- ❑ Two storey commercial building with basement car parking



High Rise Apartments



- 12 level, apartment block built at a high susceptible seismic region.



LIGHTER | FASTER | EASIER

High Rise Towers



- ❑ Twin 12 storey apartment buildings built using a pre-cast concrete core and structural steel frame.
- ❑ Speed of erection is the prime consideration for using Speed Floor in the Towers.





Speed Floor Applications

The Speed floor composite flooring system is suitable for use in all types of construction including :

- Steel frames structures
- RCC frame buildings
- Poured insitu or precast concrete frames
- Light gauge steel frames
- Conventional Structural brick wall constructions etc

Work Under Progress



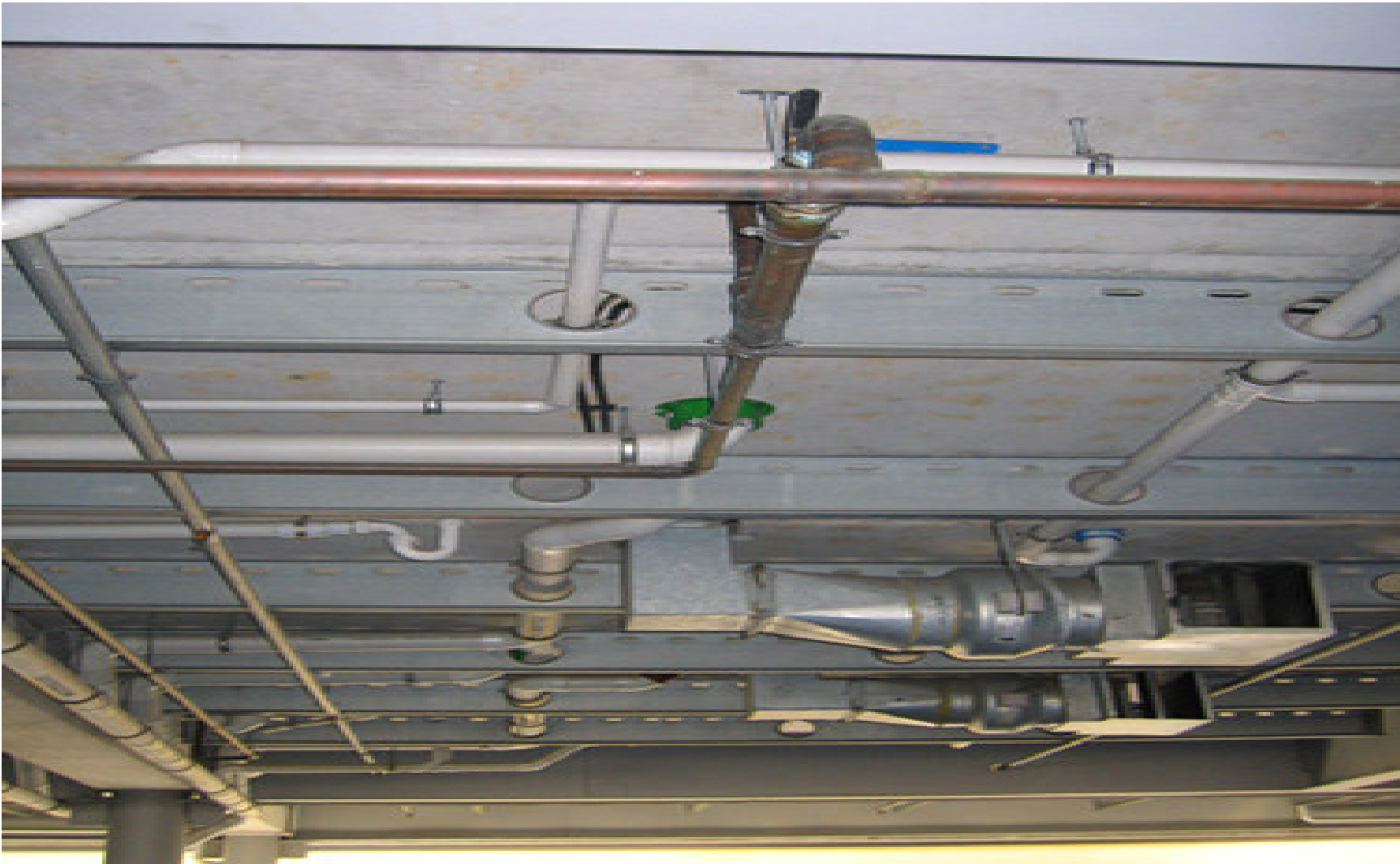
LIGHTER | FASTER | EASIER

Restaurant Using Speed Floor System



LIGHTER | FASTER | EASIER

Usage of Speed Floor System in Services



LIGHTER | FASTER | EASIER

On Going Projects



Projects Under Construction	Area (Sq Mts)	Status	Location
Parsada Dormitory (G+3)	4800	Under Progress	Raigarh (C.G)
JPL- Urja Nager-G Type	267	Completed	JPL-Tamnar
JPL- Urja Nager-D Type	801.4	Completed	JPL-Tamnar
Nalwa Lunch Room (RCC Struct)	211.4	Completed	NSPL, Raigarh
OPJIT Boys Hostel (G+2)	1155	Completed	OPJIT-Engg. College
G+11 Housing (4 Blocks)	34100	In progress	Angul- Odisha
OPJCC College (G+1)	1873.4	In progress	Patratu-Jharkhand
DDD-type (G+3)	294.36	Completed	Angul- Odisha
EEE-Type (G+3)	286	Completed	Angul- Odisha
	43789		



MULTI STOREY CAR PARK BUILDINGS

LIGHTER | FASTER | EASIER

Structural Steel Parking Buildings



- ❖ Today, structural steel-framed parking structures are being built in all parts of the world.
- ❖ By using the steel structures as main frame, there are so many advantages. Few of them are
 - **Cost savings**
 - **Faster in completion**
 - **Quality**
 - **Sustainable construction.**
 - **Early occupancy**
 - **Easy recyclable**

Car park Building with Speed Floor System



LIGHTER | FASTER | EASIER

Multi Storey Car Park



LIGHTER | FASTER | EASIER

Multi Storey Car Park



LIGHTER | FASTER | EASIER

SAMPLE:- Multilevel Car Park



LIGHTER | FASTER | EASIER

SAMPLE:- Multi Level Car Park



National Winner—Less than \$15M
STATION PLACE GARAGE—PORTLAND, ORE.



LIGHTER | FASTER | EASIER

SAMPLE:- Multi Level Car Park



LIGHTER | FASTER | EASIER

Hostel Buildings - Raigarh



Multi Storey Car Park and Residential Building



Accommodation Building



Residential Building



School Auditorium



JPL-Tamnar Office Building



Office Buildings



Under construction

OP-Jindal Institute of Technology RAIGARH



Thank you