



**Patil Precast Pvt .Ltd**

All Precast Solutions Under One Roof

PRECASTER TO THE NATION

**PATIL GROUP corporate Film**

# PATIL GROUP

**Patil Rail Infrastructure Pvt Ltd** is an established business who engaged in developing complete rail track engineering solutions.

Started its journey in 1971 by setting up its first sleeper plant to supply concrete sleepers to the Indian Railways.

Started with precast concrete poles, pipes for Water Supply and Irrigation, and then ventured into Concrete sleepers, Turnout sleepers and Bridge Slabs Box girders, U girders and Manholes.

Large scale manufacture of precast elements from 1 ton to 185 tons.

Today it has 26 manufacturing locations with an annual capacity of 3.6 million sleepers. The adoption of modern technology and major infrastructure upgrade by the Indian Railways has poised the group for a leap into a fast growth trajectory.

**Today, the group is the one-stop solution provider for all railway track needs – heavy haul, high speed or urban metro.**



# OUR JOINT VENTURE PARTNER

HOSSLOH AG OF GERMANY  
HOSSLOH COGIFER OF FRANCE  
CCI OF ITALY  
TEK OF U.S.

TOTAL NO. OF EMPLOYEES IN PRE-CAST FACTORIES..	5200
TOTAL NO. OF EMPLOYEES IN THE DESIGN CENTRE..	20
TOTAL NO. OF EMPLOYEES IN IN-HOUSE FABRICATION CENTRE..	150



# PATIL GROUP'S STATE OF THE ART PLANTS







**Casting**



**Concrete  
Vibration**



**ing**

**Pre-Stressing**



**Water Curing**



**Stocking Yard**



# RHEDA MANUFACTURING



# TESTING LABORATORY

- ❑ In-house Testing Laboratory for dynamic loading, static loading.
- ❑ In-house preparation of various Mix design and steam curing cycles for various pre-cast products.

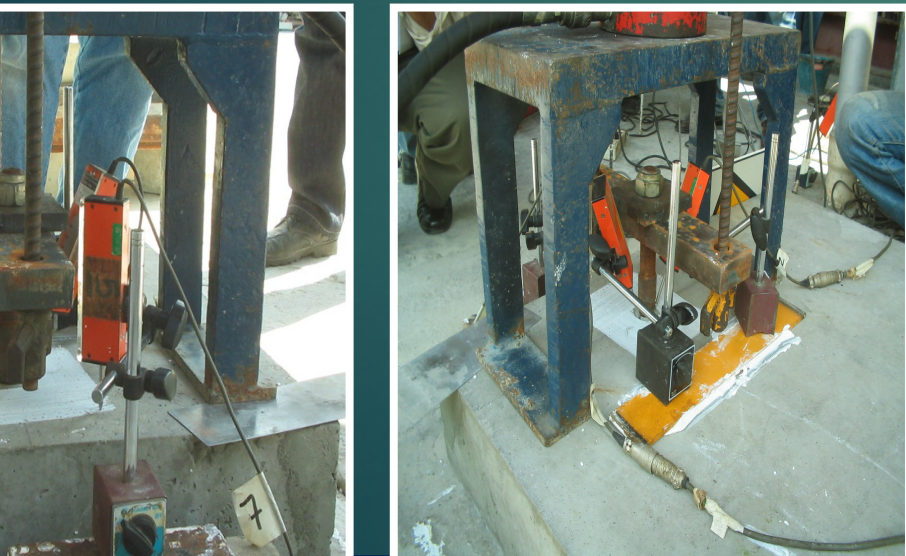
## PILE SEAT VERTICAL LOAD TEST



## SHEAR RESISTANCE TEST



## STEM TEST – PULL OUT TEST



## SIMULATION TEST



# QUALITY COMMAND CENTRE

All the precast plants are connected to the central command centre where the complete manufacturing process i.e.; casting, vibration, prestressing, steam-curing, tensioning, demoulding, etc are recorded live.

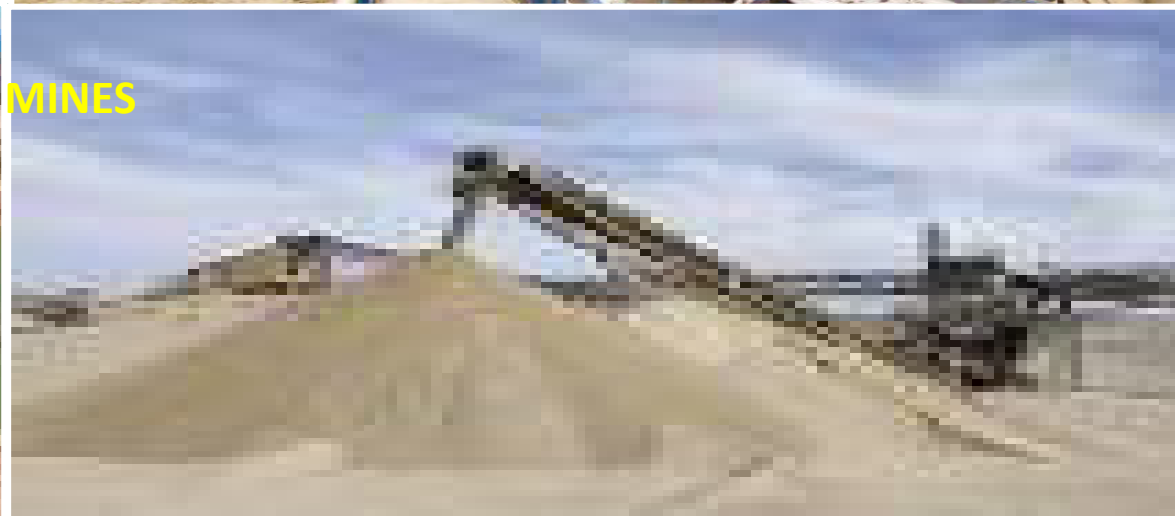
# BACKWARD AND FORWARD INTEGRATION

- Complete backward and forward integration of raw material for pre-cast products like metal quarries crushers, sand mines, HTS wire manufacturing facility. This makes us a truly integrated precast company in the country, with cost efficiency. Today we consume more than 800 cu m<sup>3</sup> concrete per day for various products.

# HIGH TENSILE WIRE MANUFACTURING FACILITY



# OUR OWN CRUSHERS AND QUARRIES AND SAND MINES



# IN-HOUSE LABOUR TRAINING CENTRE

Own in-house Labour Training Centre. Today more than 5000 labourers are working in 16 of our locations. More than 200 Civil Engineers and Diploma holders are working in various difficult sites. Continuous training and development programmes are organized in the latest technology.





# WORLD CLASS PRE-CAST PRODUCT DESIGN CENTRE

OUR DESIGN CENTRE IS CAPABLE OF REPLACING ANY IN-SITU CONCRETING WITH PRE-CAST

WE WILL DESIGN, DEVELOP FORMWORKS, TEST THE PRODUCT AND DELIVER

WE HAVE NOW DESIGNED MORE THAN 12 DIFFERENT PRODUCTS IN PRE-CAST AND VARIOUS TESTS LIKE FATIGUE TESTS, STATIC TESTS WERE ALL CONDUCTED IN IIT/CHENNAI







# RECAST SOLUTIONS FOR BALLASTLESS TRACK



# HEAVY PRECASTING

**SET UP OF CASTING BED & REBAR ZIG**



**FABRICATION OF REBAR CAGE**



**SHIFTING OF U-GIRDER REBAR CAGE**



**MOVING REBAR CAGE INTO CASTING BED**



**PLACING OF INNER FORMWORK**



**POST THREADING POSITION OF B...**



**PRE-TENSIONING ARRANGEMENT**

Free End



Active End After Pre-tensioning



**CAST FULL SPAN U- GIRDER ON CASTING BEDS**



**STACKING OF FULL SPAN U- GIRDER**



# MANHOLE PRODUCTION UNIT



# MANHOLES





# RHEDA



In spite of this kind of experience to enter into the housing Precast segment we have decided to form a technological tie up with PRECAST GAINT “Qanbar Dywidag”

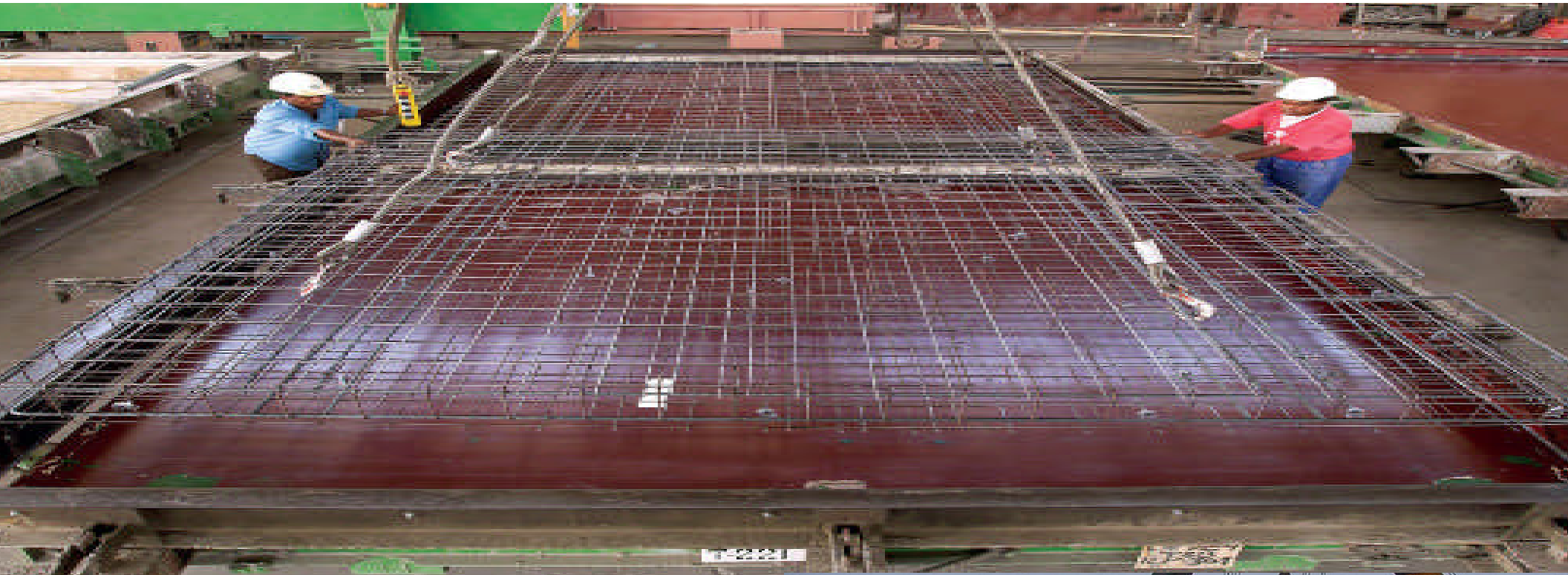


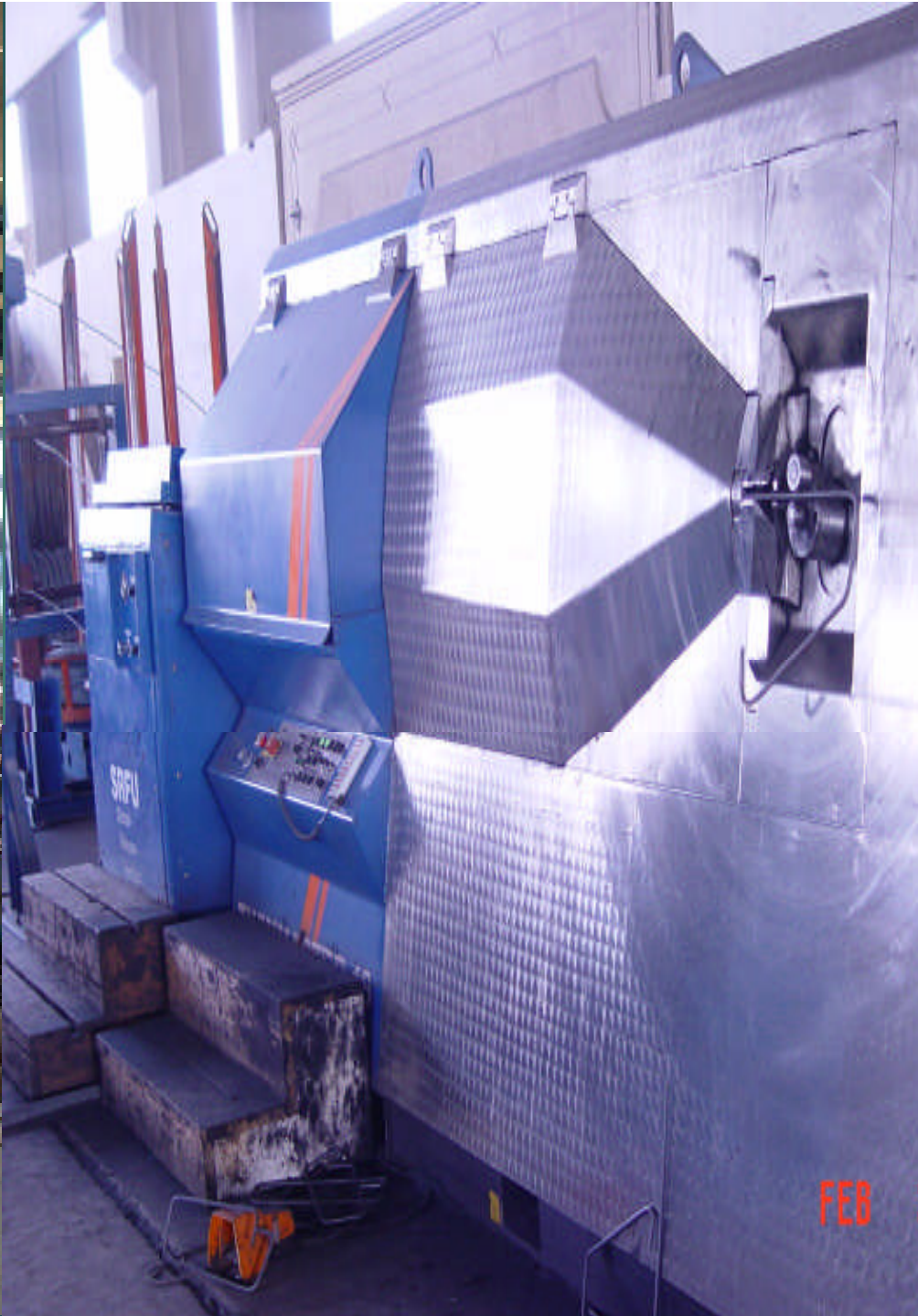
# Factory jubali



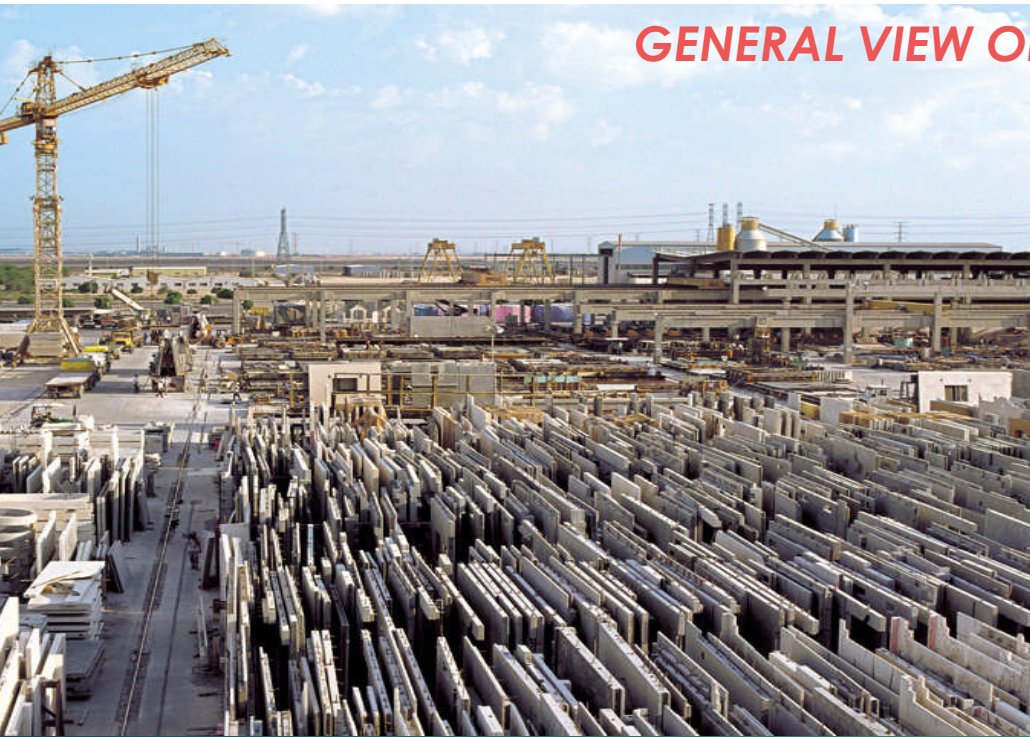
# Dry at RABIGH







# GENERAL VIEW OF STOCKING AREA







# HEADQUARTER IN RIYADH Erection













***THANK YOU***

