

StruSoft

Leading supplier of engineering software for the construction industry for more than 30 years



IMPACT Precast

BIM system for the complete prefabrication workflow from drafting table to production plant and site.

Ergjan Gjigolli

Area Manager / Project Manager

Construction Engineering

ergjan.gjigolli@strusoft.com

Phone: +46 (0)705 29 77 02

SWEDEN

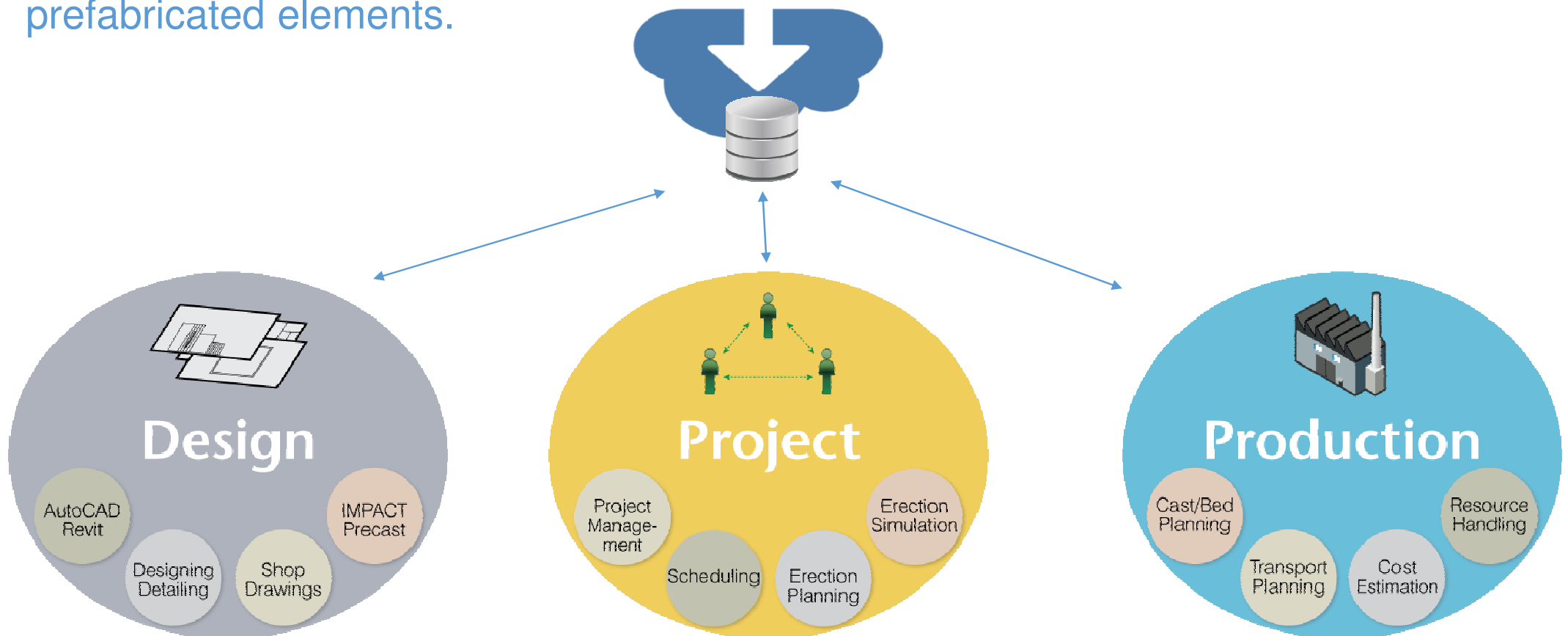
StruEngineers

Structural Consulting and Software

Pune

IMPACT Precast – BIM software for Prefabricated Factory

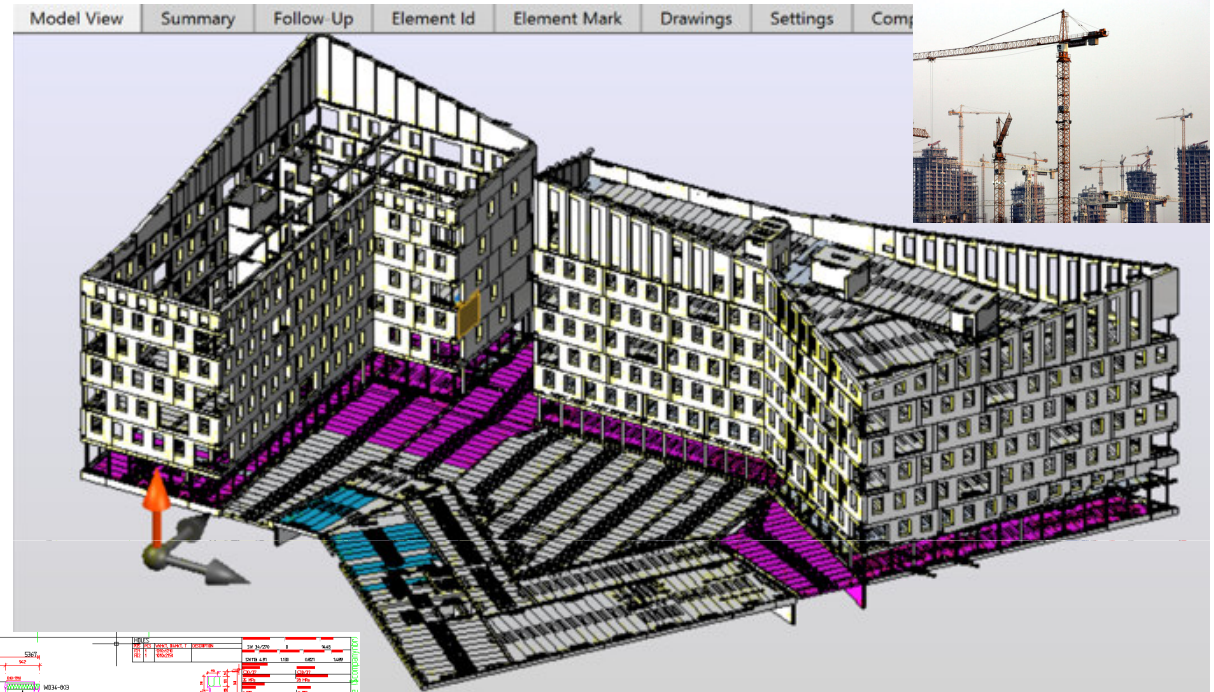
IMPACT - A complete BIM software that provides the necessary tools for the precast concrete industry to efficiently manage design, produce, transport and erect prefabricated elements.



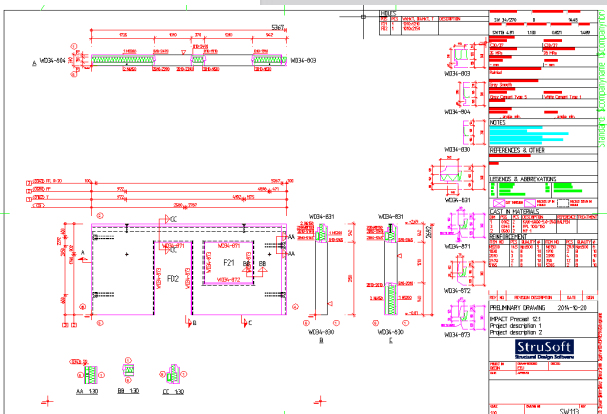
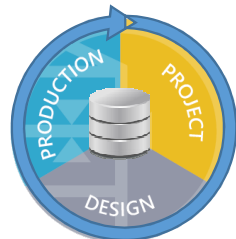
IMPACT Precast – Design phase



- 3D Modell
- Generate Shop Drawings
- Work on Plan, Elevation, Drawings
- Multi users
- Reports list
- Company Standard
- Building cranes
- Mass and size check
- Manufacturability control
- Machine limitations



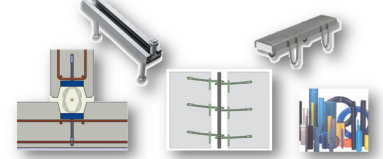
Cast-in Materials		
Name	Description	Referenc
0101	LIFT POINT	
0104	LYB-A25	
0105	LYB-A25	
0140	DW-2.5-10	
0141	DW-2.5-12	
0142	DW-2.5-14	
0143	DW-2.5-16	
0144	DW-2.5-19	
0145	SKV-4.5-16	
0146	SKV-4.5-19	
0147	DW-4.5-23	
0148	DW-4.5-29	
0150	LYW-80	39.0150
0154	KAK-6000-1.3-085	HALFEN
0155	KAK-6000-2.5-085	HALFEN
0156	KAK-6000-5.0-120	HALFEN
0157	KAK-6000-7.5-120	HALFEN
0158	KAK-6000-10-150	HALFEN
0159	KAK-6000-15-210	HALFEN
0160	KAN-6000-1.3-120	HALFEN
0161	KAN-6000-2.5-170	HALFEN
0162	KAN-6000-5.0-240	HALFEN
0163	KAN-6000-7.5-300	HALFEN
0164	HAN-6000-10-340	HALFEN
0165	KAN-6000-15-400	HALFEN
0170	KAS-6052-2.5-388	HALFEN
0171	KAS-6052-5.0-565	HALFEN
0172	KAS-6052-7.5-734	HALFEN
0173	KAS-6052-10-854	HALFEN
0174	KAS-6052-15-1065	HALFEN
0175	KAR-6050-2.5-400	HALFEN
0176	KAR-6050-5.0-580	HALFEN



CAST-IN MTRL SPECIFICATION				
PKL. NBR.	NAME	DRW. NBR.	TOT.	SWT1
0161	KAN-6000-2.5-170	HALFEN	6	
0162	KAN-6000-5.0-240	ref_commor	19	1
0272	TWG-232		2,6	
0313	SBKL-100/150	PEIKKO	2	
0342	FPL 100/150		11	2
0343	FPL 100/150		18	
0344	FPL 100/150		4	2
0580	MF 1		26	2
0993	HZA 29/20		18,8	

BENDING SCHEDULE		TABLE	REV.	PAGE NR.		
PROJECT: IMPACT Precast		P220 L40113	EGJ	2 (2)		
DATE: 2014-03-04						
A29	Diameter: 10	a	6275	g	u	End hook 1
	Cut length: 6275	b		x		End hook 2:
	Quality: B					lg radius: 0
	Number of: 4					
L6103	Diameter: 6	a	100	g	u	End hook 1
	Cut length: 1100	b	240	g		End hook 2:
	Quality: B	c	240	g		lg radius: 12
	Number of: 9	d	240	v		
L8103	Diameter: 8	a	100	g	u	End hook 1
	Cut length: 1075	b	240	g		End hook 2:
	Quality: B	c	240	g		lg radius: 16
	Number of: 7	d	240	v		

IMPACT has a component library that easily can be expanded. The Company Standard is a complete set of templates, set-ups, rules, including information of components, symbols and cranes, MEP, CIM, joints and reinforcement...

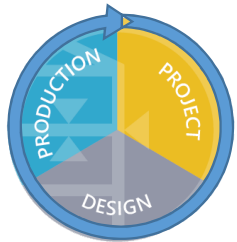


IMPACT saves time and money, reducing manufacturing drawings errors in early stage and avoid errors on site. With IMPACT 3D model Project Manager, detailers, transport planners, site managers can all work with same data.



IMPACT Precast – Project Manager & Viewer

- Overview
- Easy counts
- Follow up
- Status & Schedule Reports
- Export to ERP system
- ELiPlan, UniCAM, Bamtec, etc
- Track elements
- Site planning
- Erection planning
- Simulation
- Report lists



IMPACT automatically generates related reports for production. Project Managers, Transport Planners and Site Manager can all work with the same data.

Production Date	Cast No	Shift	Cast Unit	No Of Elements	Usage %	Status
2015-10-05	100042	1	Form1	6	44	Planned
2015-10-05	100043	1	Form2	4	28	Planned
2015-05-12	100033	1	Form1	2	14	Produced
2015-05-12	100034	1	Form2	2	19	Produced
2015-05-12	100035	1	Form4	2	14	Produced
2015-05-11	100030	1	Form1	2	12	Produced
2015-05-11	100031	1	Form2	2	12	Produced
2015-05-11	100032	1	Form4	2	8	Produced
2015-05-07	100029	1	Form1	2	400	Produced

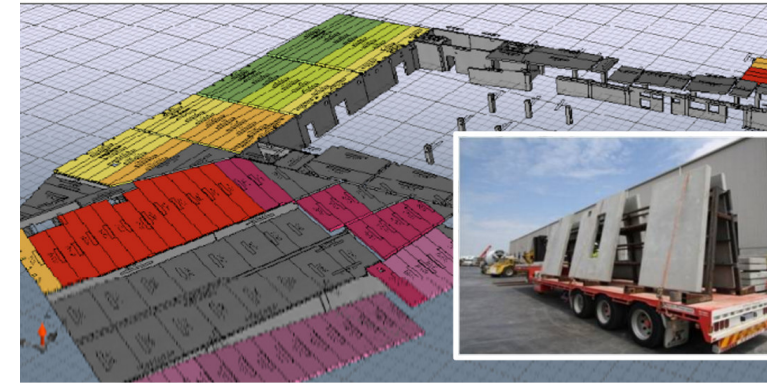
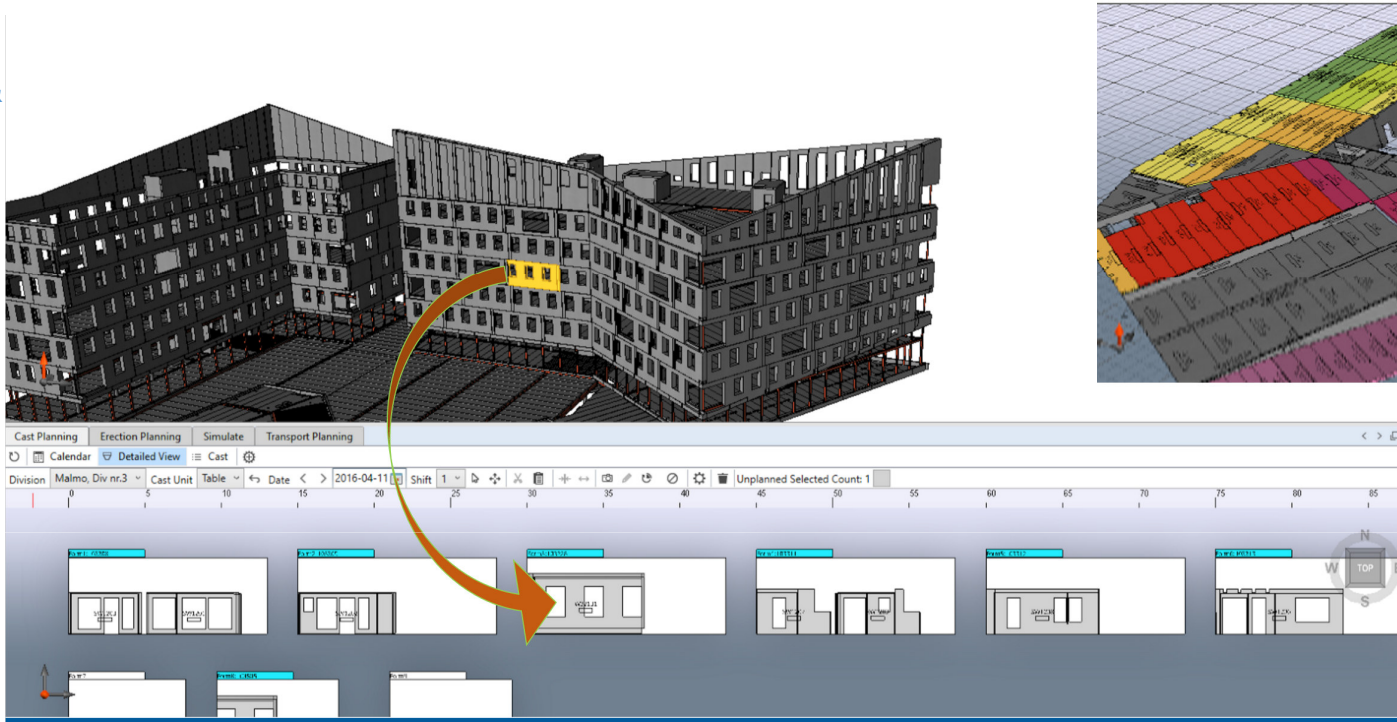
PROJECT	ELEMENT MARK	ELEMENT ID
TEST_12	H3	25
BUILDING	FLOOR	MASS (ton)
1	1	4.49
CAST DATE		
2013-01-14		



HDF : 100002 Hollowcore/19 Elements:25, Strands:4 Usagc:93%	HC101 Proj:PLAN_PROJECT Id:1 Es:1	HC102 Proj:PLAN_PROJECT Id:2 Es:2
----------------------------------------------------------------------	--------------------------------------	--------------------------------------

IMPACT Resource Manager

- Company Settings
- Production Time & Cost
- Workload
- Dispatch
- Fine Planning
- Production
- Storage
- Follow-Up
- Report Settings
- Quality Control
- User Settings



Elements time detail

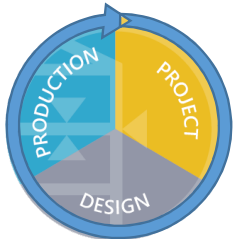
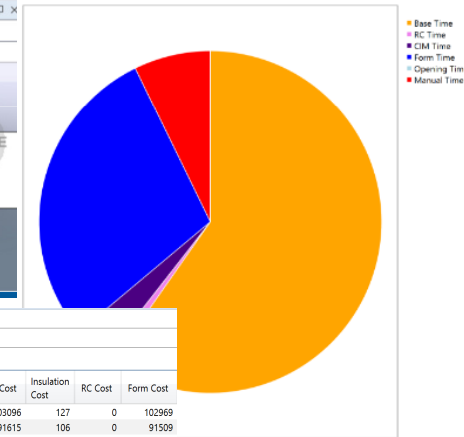


Table | Graphs

Graph Options: Element Count

Element Count

Project Settings

BEGIN_150929 IMPACT Precast 142

- Production Time
- Production Cost
- Components

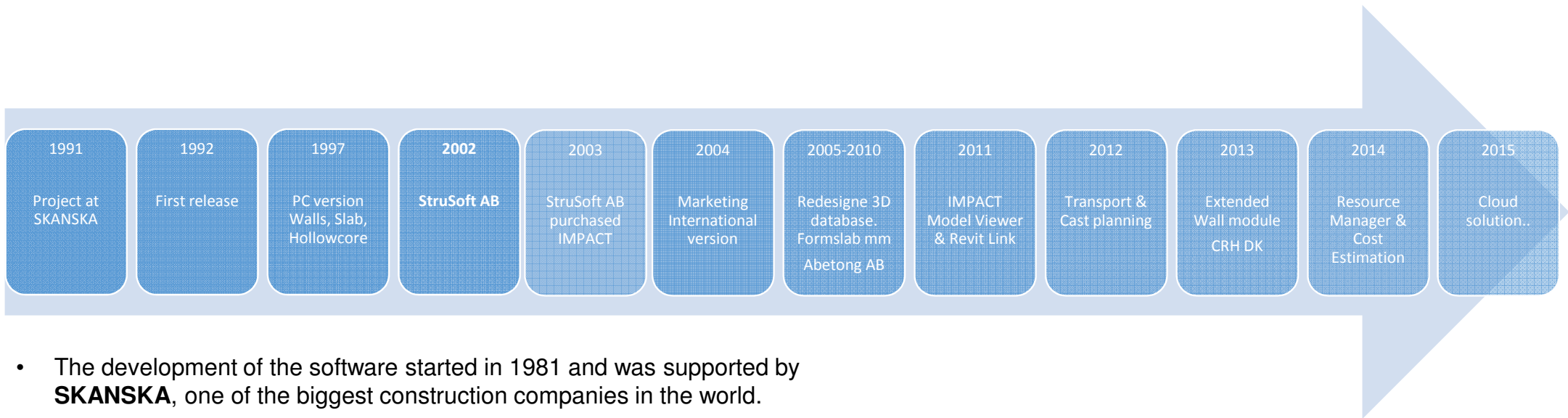
Reinforcement	Opening Holes	Endcaps
Properties		Cast-In Material
Name	Value	
Geometry		
Length	4250 mm	
Width	340 mm	
Height	2692 mm	
Net Area	7.77 m ²	
Gross Area	11.44 m ²	
Bounding Box Area	11.44 m ²	
Mass	3.61 t	
Volume	1.435 m ³	
Cost Estimation		
Total Cost	106522 SEK	
Manual Cost	0 SEK	
Total Time	79.4 h	

Production Cost Data | Graphical View

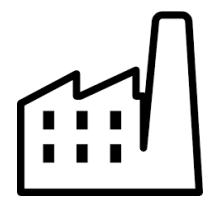
Definitic	Product	Length	Width	Height	Area	Mass	V _l	Sum	Total Cost	Working Cost	Material Cost	Insulation Cost	RC Cost	Form Cost
SW34	SW34	4250	340	2692	11.44	3.64	1.4	1	106529	3432	103096	127	0	102969
SW34	SW34	3777	340	2692	10.17	3.01	1.1	1	94666	3050	91615	106	0	91509
SW34	SW34	4053	340	2692	10.91	4.29	1.7	1	101628	3273	98355	159	0	98196
SW34	SW34	2180	340	2692	5.87	1.59	0.6	1	106541	48395	58146	41	5288	52817
SW34	SW34	4053	340	2692	10.91	4.29	1.7	1	101628	3273	98355	159	0	98196
SW34	SW34	3777	340	2692	10.17	3.01	1.1	1	94666	3050	91615	106	0	91509
SW34	SW34	4250	340	2692	11.44	3.64	1.4	1	106529	3432	103096	127	0	102969
SW34	SW34	5727	340	2692	15.42	5.28	2.1	1	143569	4625	138944	190	0	138754
SW34	SW34	1862	340	2692	5.01	2.33	0.9	1	46703	1504	45199	86	0	45113
SW34	SW34	3397	340	2692	9.14	2.52	1.0	1	85132	2743	82388	86	0	82303
SW34	SW34	2140	340	2692	5.76	2.19	0.8	1	53650	1728	51921	73	0	51640
SW34	SW34	7160	340	2692	19.27	7.96	3.1	1	179549	5782	173767	295	0	173472
SW34	SW34	4480	340	2692	12.06	4.70	1.8	1	225475	105262	120213	169	11503	108541
SW34	SW34	4480	340	2692	12.06	4.70	1.8	2	112328	3618	108710	169	0	108541
SW34	SW34	2140	340	2692	5.76	2.19	0.8	1	53650	1728	51921	73	0	51648
SW34	SW34	3397	340	2692	9.14	2.52	1.0	1	85132	2743	82388	86	0	82303
SW34	SW34	1862	340	2692	5.01	2.33	0.9	1	86256	36904	49351	86	4152	45113
SW34	SW34	5719	340	2692	15.40	5.02	1.9	1	272450	120255	152194	184	13441	138570
SW34	SW34	4250	340	2692	11.44	3.61	1.4	2	106522	3432	103090	121	0	102969

IMPACT is used as a tool for effective and industrialized production of concrete building constructions to reduce man-hours in design and production, reduce lead-time and to increase the quality.

History



- The development of the software started in 1981 and was supported by **SKANSKA**, one of the biggest construction companies in the world.

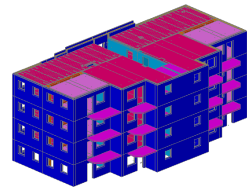


StruSoft - We provide Software's and Services



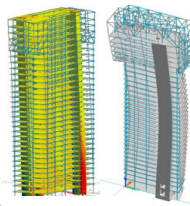
IMPACT Precast

3D/BIM complete system for modeling and planning prefabricated projects.



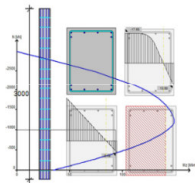
FEM-Design

3D advanced modelling software for finite element analysis and design of load-bearing concrete, steel and timber structures according to Eurocode.



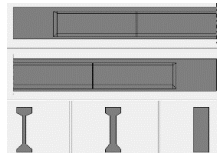
WIN-Statik

2D powerful but easy to use software series for common engineering design tasks. Analysis and design of columns, beams, sections and frames, according to a chosen design code.



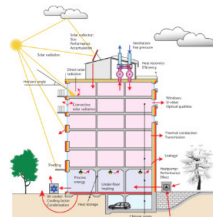
PRE-Stress

An advanced software for calculations of pre-stressed concrete elements.



VIP-Energy

An application used for calculating the energy performance for buildings.



INSTALLATI
ON



ASSISTANCE/CUST
OMER
DEVELOPMENT



SUPPORT
IPLEMENTATION



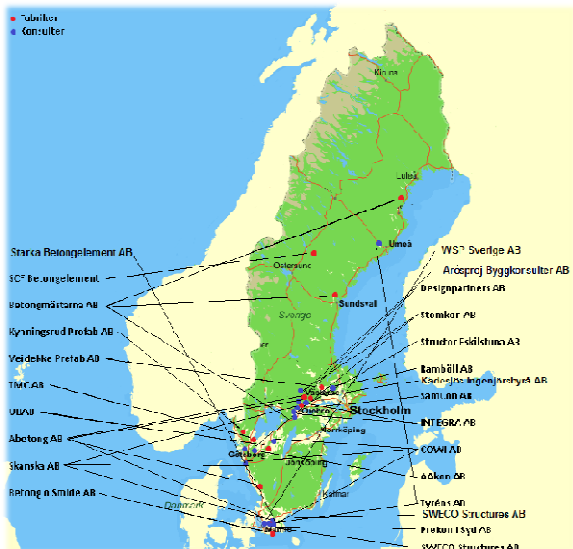
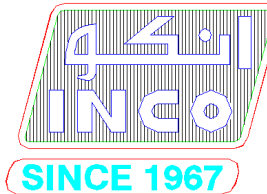
TRAINING

StruSoft is worldwide known software producer

MORE THAN 10 000 USERS

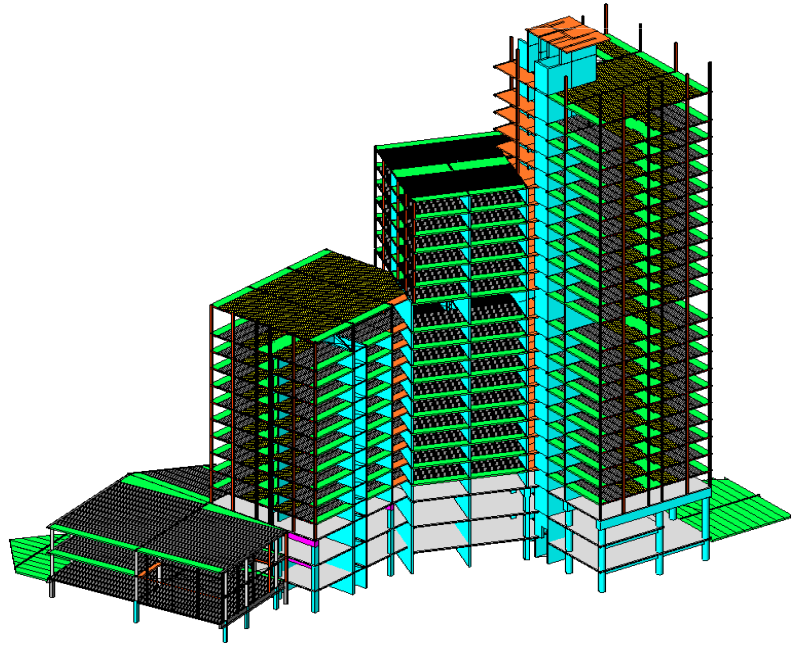
MORE THAN 20 COUNTRIES

MORE THAN 1 000 CUSTOMERS



Customer Project “ Malmö Live”

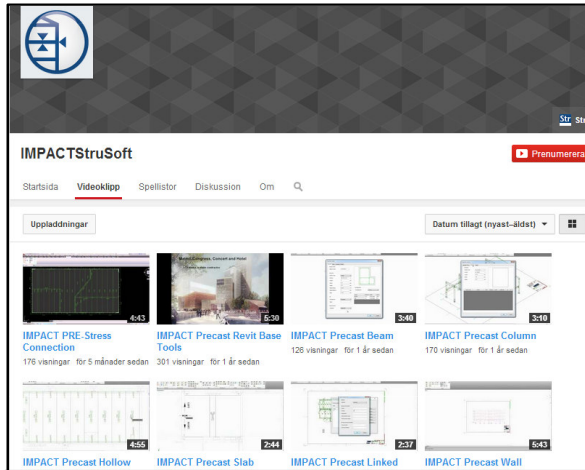
*A BIM Building project designed in Revit Structure, ADT
and used IMPACT Precast for production and assembly*





More information about StruSoft

VIDEO TUTORIALS



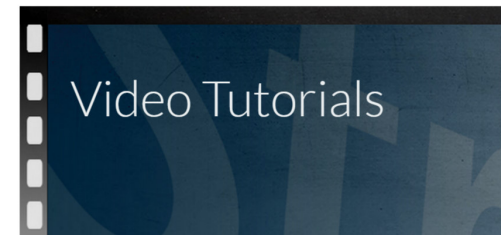
<http://www.youtube.com/user/IMPACTStruSoft>

TIPS & TRICKS



<http://strusoft.blogspot.com>

FAQ & VIDEO-TUTORIALS



StruSoft

<http://www.strusoft.com/video-tutorials>

Ergjan Gjigolli

Area Manager / Project Manager

Construction Engineering

ergjan.gjigolli@strusoft.com

Phone: +46 (0)705 29 77 02

StruSoft